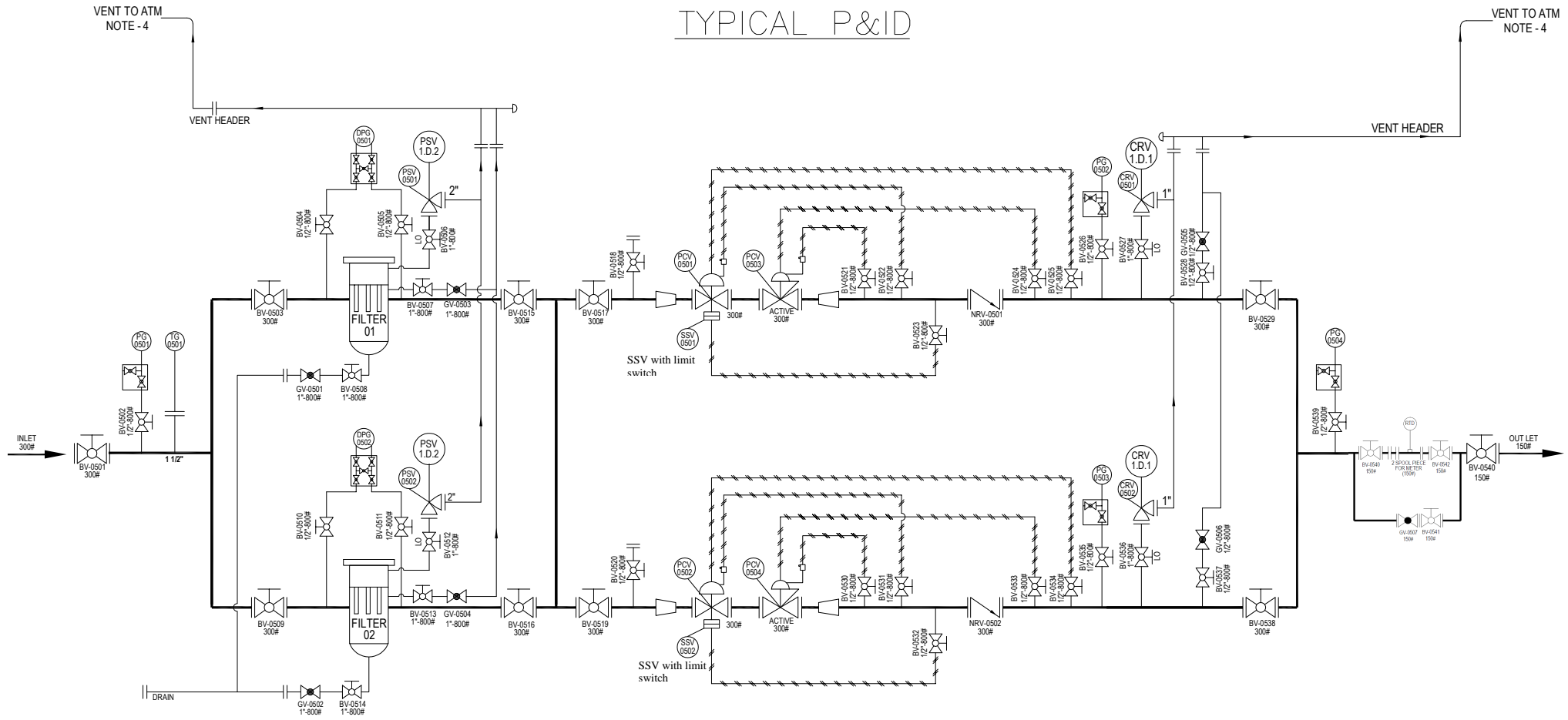


# TYPICAL P&ID




**NOTE: -**

1. MATERIAL OF CONSTRUCTION AS PER GGL PMS.
2. ALL G.I. PIPE & PIPE FITNGS & FASTENERS WITH WASHER SHALL BE HOT DIP GALVANIZED.
3. CANOPY DETAILS: CANOPY TO BE FABRICATED FROM FRP SHEET.
4. ALL VENT LINE SHALL BE ELEVATED AT 3 METER FROM THE HIGHEST OPERATING PLATFORM.
5. FILTER IS VERTICAL TYPE WITH DAVIT ARM.
6. COPPER JUMPER PLATE TO BE PROVIDED AT EACH FLANGE CONNECTION.
7. OUTLET PIPE LINE SIZE TO BE DESIGNED ON 4 barg.
8. SENSING LINE OF REGULATORS & SSV SHALL BE ON OUTER SIDE IN BOTH STREAM.
9. SIZING SHALL BE DONE BY THE VENDER & SHALL BE SUBMITTED TO GGL FOR APPROVAL.

**DESIGN PARAMETERS**

FLUID SERVICE	:	NATURAL GAS
FLOW	:	500/1000/2000/5000/10000SCMH
INLET PRESS. (TYPE-1 DRS)	:	10 TO 40 barg
INLET PRESS. (TYPE-2 DRS)	:	5 TO 40 barg
OUTLET PRESS.	:	4 barg
SET RANGE	:	1.5 TO 6 barg
INLET/OUTLET SIZE	:	-
PRESSURE RATING (INLET/OUTLET)	:	300# / 150#
WORKING TEMP.	:	0 TO 50°C
DESIGN PRESSURE	:	49 barg
DESIGN TEMPERATURE	:	-10 TO 65°C
RADIOGRAPHY	:	100%
TEST PRESSURE	:	73.5 barg

02	30.06.26	Meter bypass spool added		
01	05.12.20	LTCS MATERIAL REMOVED		VG
NO.	DATE	REVISION		REV. BY. SIGN.
	PREPARED BY	CHECKED BY	APPROVED BY	
SIGN.				
NAME		SG/MP		
DATE				
FOR	GGL	GGL	GGL	
 <b>GUJARAT GAS LIMITED</b> TECHNICAL SERVICES				
PROJECT NAME: DRS/CPRS-500/1000/2000/5000/10000 SCMH				
STATUS: ISSUED FOR TENDER				
TITLE: TYPICAL P&ID OF DRS/CPRS				
SCALE	SHEET	DRAWING NO.		REV.
NTS	1 OF 1	GGL-TS/TYPICAL_P&ID/DRS CPRS		3

THIS DRAWING AND DESIGN IS THE PROPERTY OF G.C.L. AND MUST NOT BE COPIED OR LENT WITHOUT THEIR PERMISSION IN WRITING.